



SPITFIRE DOORS

THE ART OF PERFECTION

S-700 PIVOT DOORS



Country Gates
& Barriers

WELCOME TO SPITFIRE DOORS,
THE WORLD'S MOST EXCLUSIVE
COLLECTION OF LUXURY
RESIDENTIAL ENTRANCE DOORS.

PIVOTS. DOORS WITH ATTITUDE

Pivot doors are wider and taller by design. Their sheer scale allows you to be creative when designing an awesome entrance to your property.

The inherent strength of our pivot door frame combined with our clever pivot mechanism means that a Spitfire pivot door is capable of carrying heavy external finishes like laminated glass or wood, with ease.

Our hi-security pivot doors which have been independently tested, can be installed either externally or internally, often used to protect 'safe rooms'.

Pivot Doors are definitely 'on trend' and always create a stunning first impression.



SPITFIRE
DOORS

THE ART OF PERFECTION

"The details are not the design,
they make the design."
- Charles Eames



1002



1001



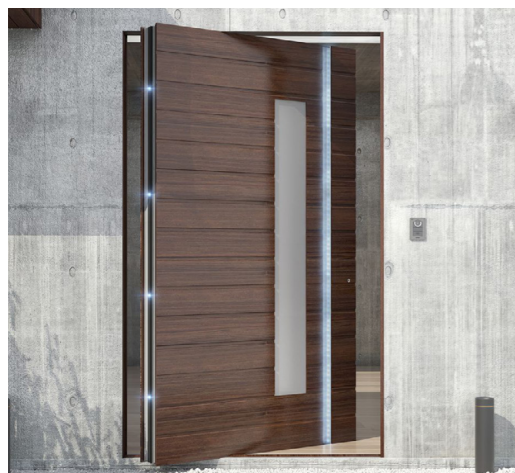
1003



1010



1003



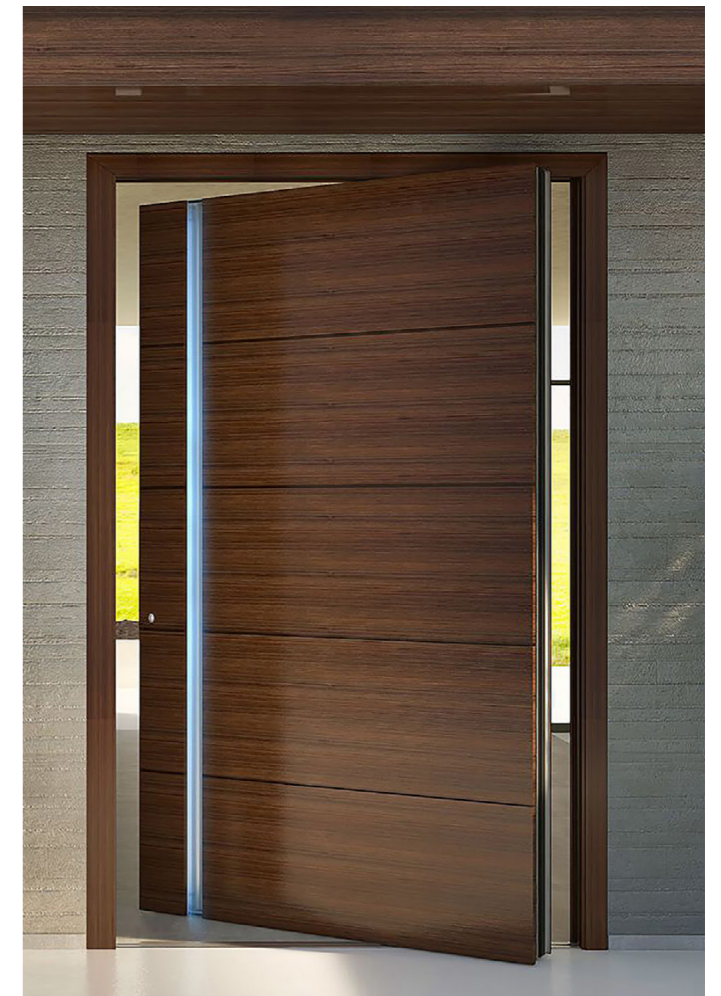
1005



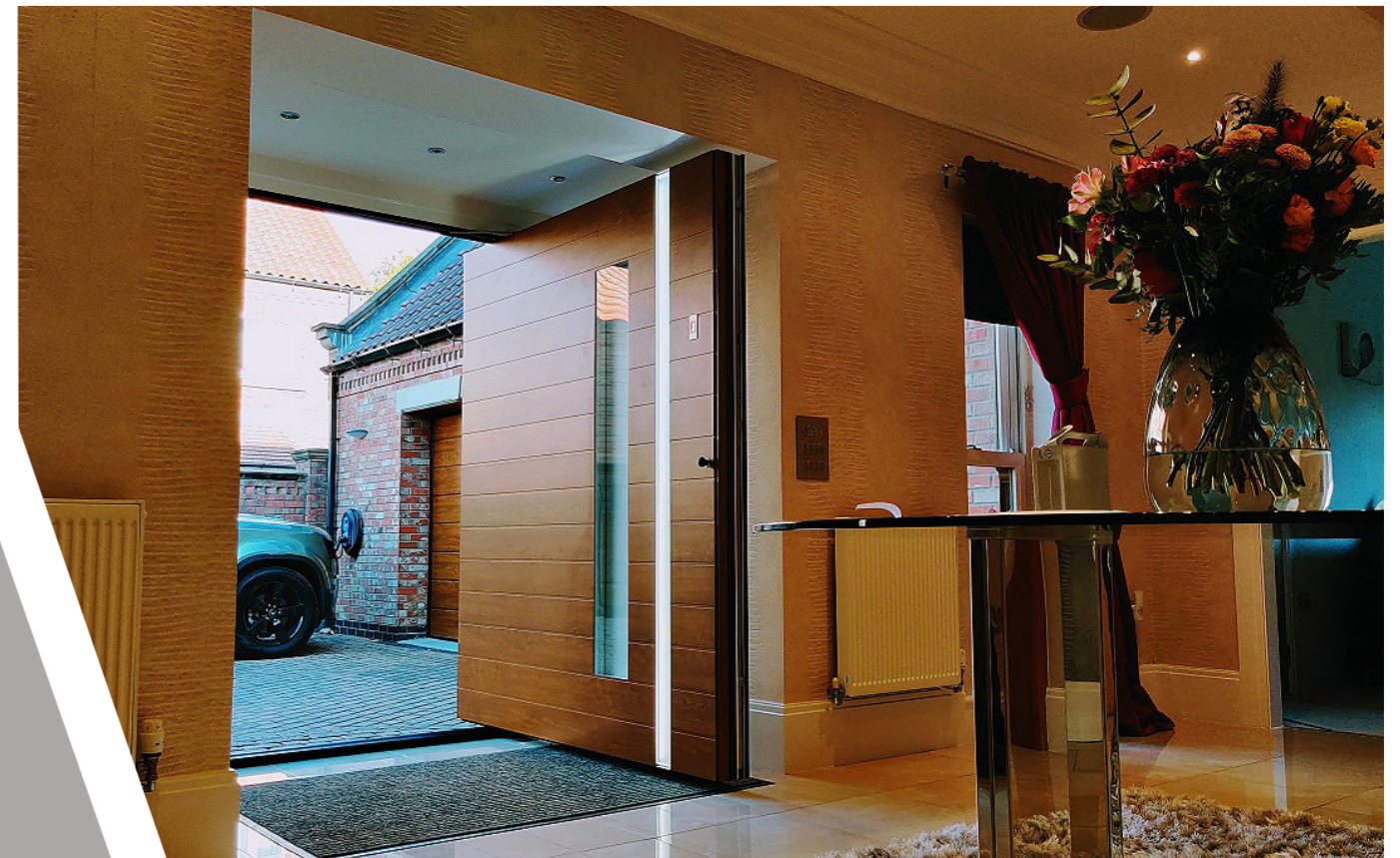
1003



1003-BG



1003





1035



1035



1003

DESIGN OPTIONS

We can make pivot doors from a minimum of 1400mm to a maximum of 2000mm wide, and a maximum of 3000mm high. By special arrangement, we can manufacture Pivot doors up to 5000mm high.

Our pivot threshold is virtually flush at floor level, so it is very important to consider your internal floor finishing material (marble, tile, carpet) before ordering your door. A hidden weatherbar drops down inside the door as it is closing but it is always best to have a non-permeable internal floor material behind a pivot.

Spitfire pivot's can be dressed in exciting finishes, including stainless steel, carbon-fibre effect, aluminium, wood effects, corten or laminated glass.

Double pivot doors are available, as are door and a half configurations, or doors with matching side frames or glazed side elements.

Spitfire pivots can be installed within a Spitfire aluminium curtain wall assembly or into brick, stone or steel.

The thermal performance of our pivot doors will vary slightly by finishing material, but they are always below $1.0 \text{ W/m}^2\text{k}$, which is way below current Building Regulation requirements.

"Beauty is the harmony
of function and form."

- Alvar Aalto





1014



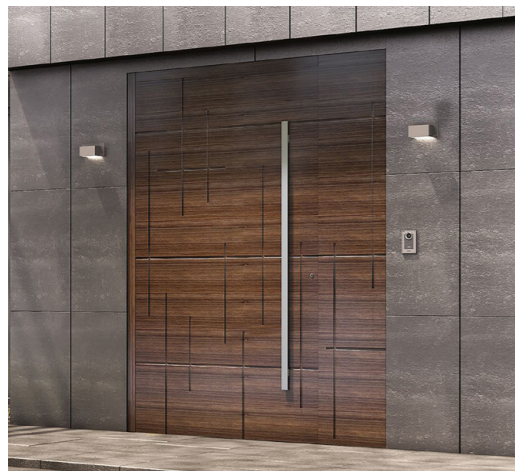
1014



1012-BG



1016



1019



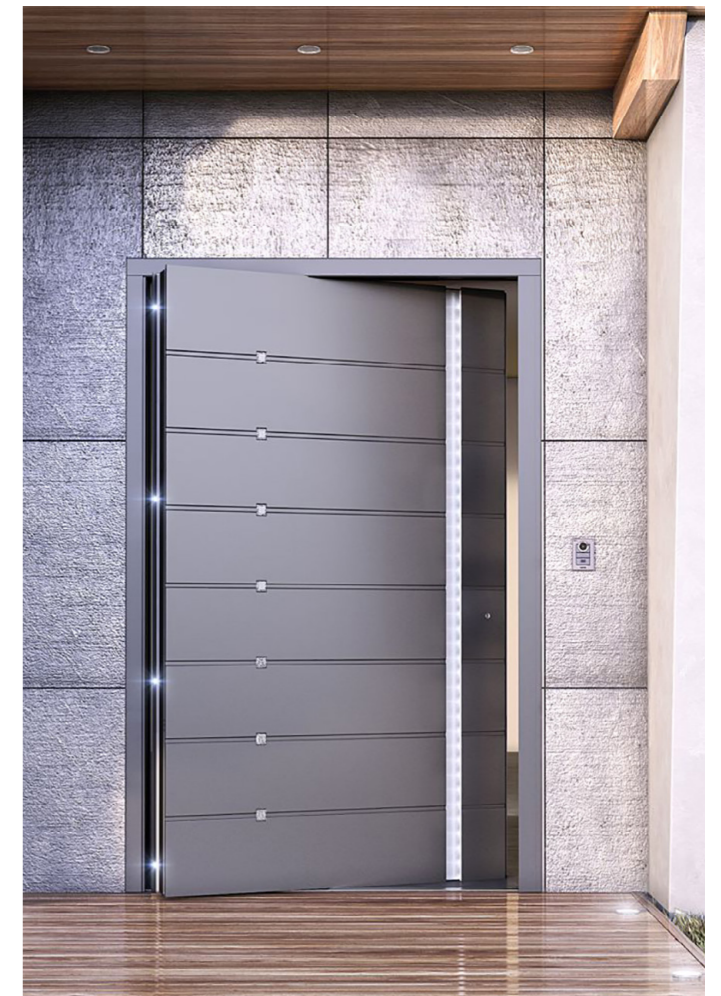
1019



1006



1009



1008

UNIQUE FEATURES

DOOR FRAME

- Our 3mm thick aluminium door frame is 113mm deep (front to back)

DOOR ACCESSORIES

To every Pivot Door, we fit a special recessed handle externally and a lever handle internally. To ensure maximum security, every Pivot Door is equipped with an automatic GU-Slamshut locking system as standard.

We offer the option of including built-in LED lights within the external recessed handle or fitting a vertical line of small LED's down the back of the door sash, only visible when the door is open. We also offer the option of adding a concealed door closer. The closer unit is located within the sash, and all that is visible is a small silver arm at the top, connecting the frame to the door.

Fingerprint readers are a highly desirable upgrade and of course, we allow you to add Swarovski crystals to most Spitfire pivot doors.

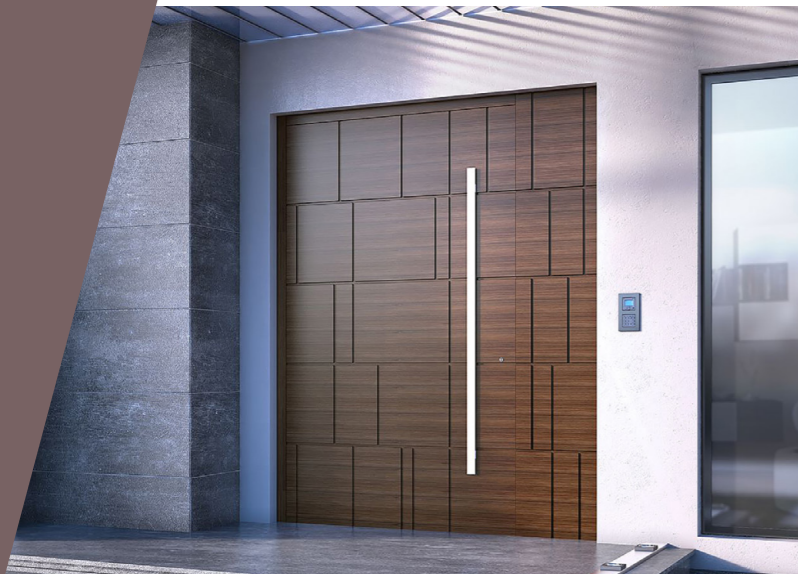
PERFORMANCE

Each Pivot door is slightly different depending on the material you choose, but in general our doors achieve:

- Class 3 Air Tightness
- Class 1A Water Tightness
- C5 Wind Load Resistance
- Soundproof to 34 decibels

"Sometimes, less is more."
- William Shakespeare





1018



1018



1017



1015



1021



1004



1003



1021

Most of the door designs in this brochure are also available as hinged doors, subject to size limitations.

HOW PIVOT DOORS OPERATE

The pivot is a very simple mechanism which will give many years of trouble-free use because there is so little that can fail. At the top and bottom on the hinge side, is an elongated pin that is embedded in the sash and that pin slots into the outerframe.

The pivot point is approximately 450mm in from the edge of the door sash, depending on the overall size of the door itself. Surprisingly for such huge doors they are very light to operate, a child can easily open and close them and the concealed door closer will effectively 'soft close' the door.

A weatherbar will drop down under the door as the door closes, to form a seal with the threshold. Due to the almost completely flush detailing at the threshold, when installing a pivot in exposed locations we recommend that a non-permeable floor covering is used inside the door, to cope with potential drops of water ingressing.

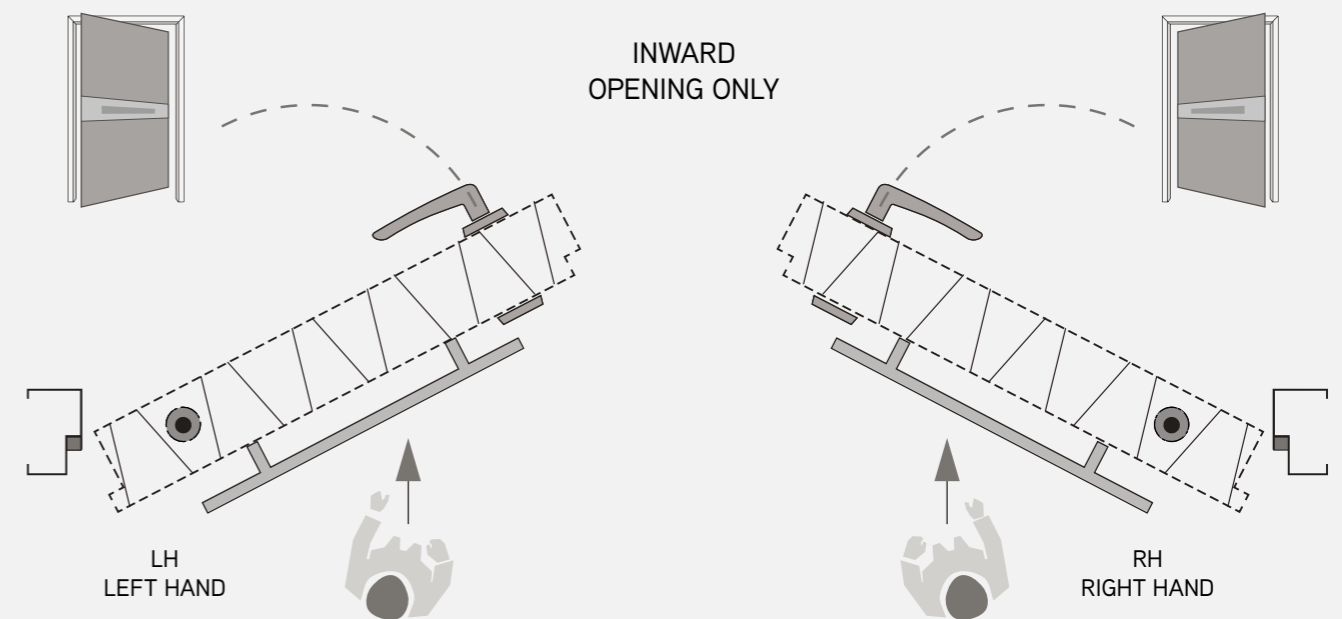
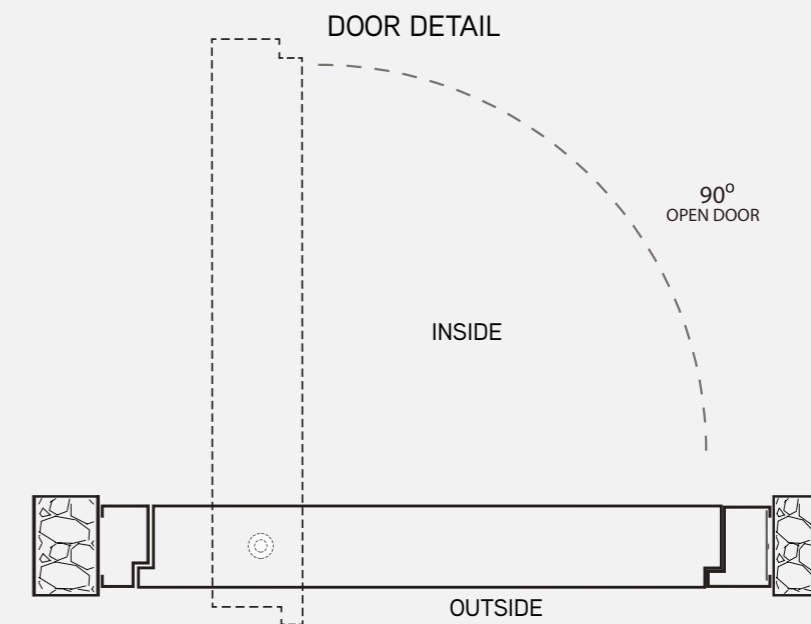
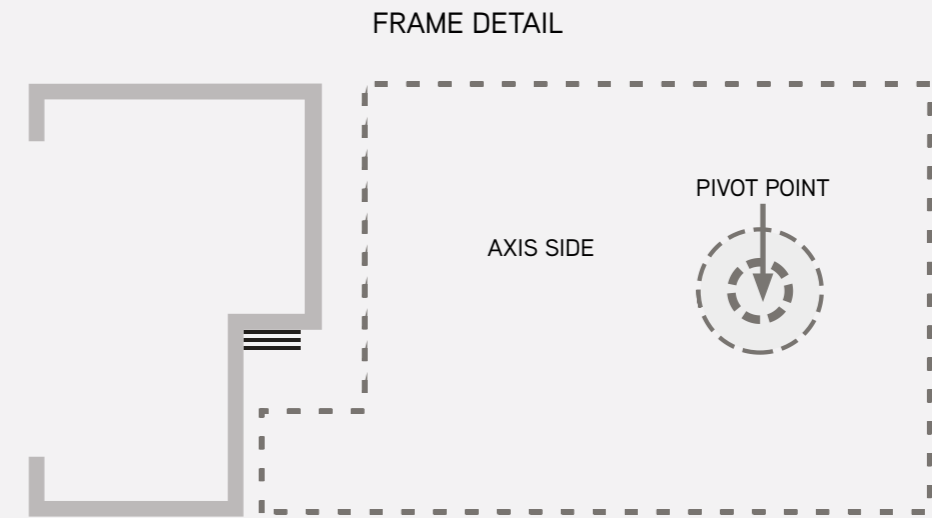
REFURBISHMENT AND NEW BUILD

	WIDTH	HEIGHT
MIN.	1400mm	2000mm
MAX.	2000mm	3000mm

*5000mm high doors by special order



1021



RAL FINISHES AVAILABLE

Colours shown are for illustrative purposes only. Please request a colour swatch for an accurate colour match.

RAL colours available in a choice of matt or textured finish

RAL 1013 Matt	RAL 1013 Textured	RAL 1015 Matt	RAL 1015 Textured	RAL 1019 Matt	RAL 1019 Textured	RAL 3004 Matt	RAL 3004 Textured	RAL 3005 Matt
RAL 3005 Textured	RAL 5002 Matt	RAL 5002 Textured	RAL 5003 Matt	RAL 5003 Textured	RAL 5005 Matt	RAL 5005 Textured	RAL 5009 Matt	RAL 5009 Textured
RAL 5010 Matt	RAL 5010 Textured	RAL 5014 Matt	RAL 5014 Textured	RAL 5015 Matt	RAL 5015 Textured	RAL 5024 Matt	RAL 5024 Textured	RAL 6003 Matt
RAL 6003 Textured	RAL 6005 Matt	RAL 6005 Textured	RAL 6009 Matt	RAL 6009 Textured	RAL 7001 Matt	RAL 7001 Textured	RAL 7005 Matt	RAL 7005 Textured
RAL 7006 Matt	RAL 7006 Textured	RAL 7011 Matt	RAL 7011 Textured	RAL 7012 Matt	RAL 7012 Textured	RAL 7015 Matt	RAL 7015 Textured	RAL 7016 Matt
RAL 7016 Textured	RAL 7021 Matt	RAL 7021 Textured	RAL 7022 Matt	RAL 7022 Textured	RAL 7023 Matt	RAL 7023 Textured	RAL 7024 Matt	RAL 7024 Textured
RAL 7030 Matt	RAL 7030 Textured	RAL 7031 Matt	RAL 7031 Textured	RAL 7033 Matt	RAL 7033 Textured	RAL 7034 Matt	RAL 7034 Textured	RAL 7035 Matt
RAL 7035 Textured	RAL 7037 Matt	RAL 7037 Textured	RAL 7038 Matt	RAL 7038 Textured	RAL 7039 Matt	RAL 7039 Textured	RAL 7040 Matt	RAL 7040 Textured
RAL 7042 Matt	RAL 7042 Textured	RAL 7044 Matt	RAL 7044 Textured	RAL 8011 Matt	RAL 8011 Textured	RAL 8014 Matt	RAL 8014 Textured	RAL 8017 Matt
RAL 8017 Textured	RAL 8019 Matt	RAL 8019 Textured	RAL 9005 Matt	RAL 9005 Textured	RAL 9006 Matt	RAL 9006 Textured		

RAL colours available in a matt finish only

RAL 3002 Matt	RAL 3003 Matt	RAL 5000 Matt	RAL 5001 Matt	RAL 6000 Matt	RAL 6011 Matt	RAL 6020 Matt	RAL 6028 Matt	RAL 6033 Matt
RAL 7003 Matt	RAL 7009 Matt	RAL 7032 Matt	RAL 8008 Matt	RAL 8012 Matt	RAL 8015 Matt	White Matt		

RAL colours available in a textured finish only

RAL 1000 Textured	RAL 3000 Textured	RAL 5007 Textured	RAL 5008 Textured	RAL 5017 Textured	RAL 5023 Textured	RAL 6012 Textured	RAL 6017 Textured	RAL 6019 Textured
RAL 6021 Textured	RAL 6025 Textured	RAL 6027 Textured	RAL 6029 Textured	RAL 7000 Textured	RAL 7004 Textured	RAL 7010 Textured	RAL 7026 Textured	RAL 7043 Textured
RAL 7047 Textured	RAL 8003 Textured	RAL 8016 Textured	RAL 8025 Textured	RAL 8028 Textured	RAL 9001 Textured	RAL 9002 Textured	RAL 9003 Textured	RAL 9007 Textured
RAL 9010 Textured	RAL 9016 Textured	RAL 9017 Textured	RAL 9018 Textured					

RAL colours available in a metallic finish only



RAL 9007 Matt - DB
702 Akzo - Metallic

Wood effect finishes

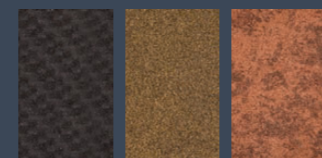


T630 T631 T510 T850 T800 T820 T895 T900 T830

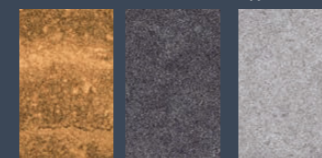


T835 T855 T860 T865 T870 T875 T880 T910 T930

Designer finishes



T885 Carbon T890 Corten T905 Copper

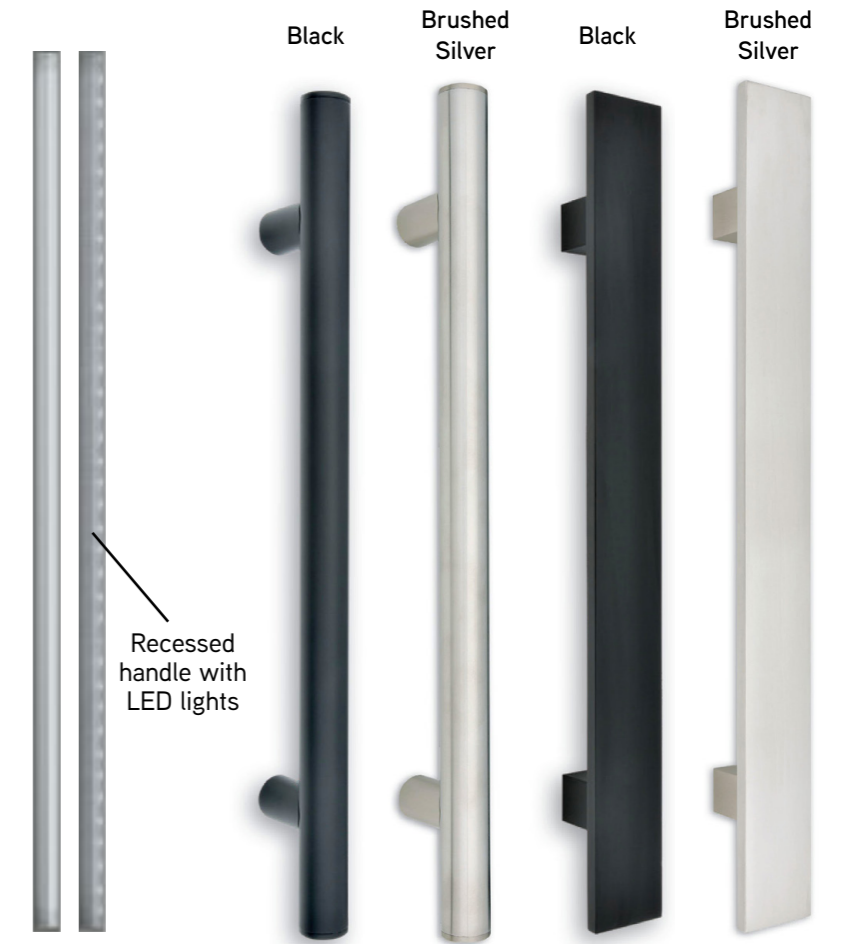


T915 Ice Touch T920 Concrete Dark T925 Concrete Light



Fingerprint scanner on door sash (silver or black)

EXTERNAL HANDLES



1800mm Round Pull Bar Handle

1800mm Blade Pull Bar Handle

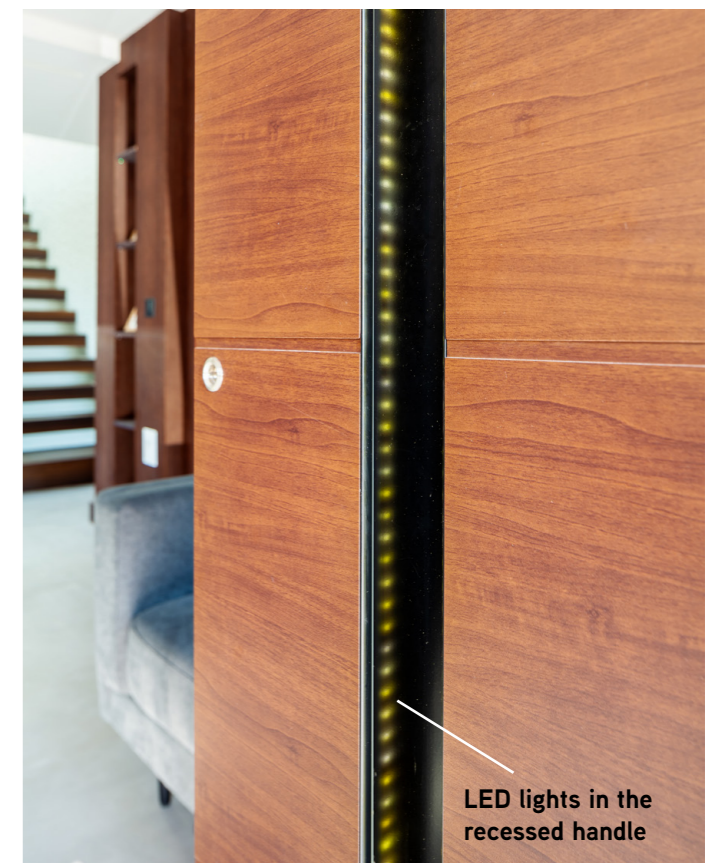
INTERNAL HANDLES



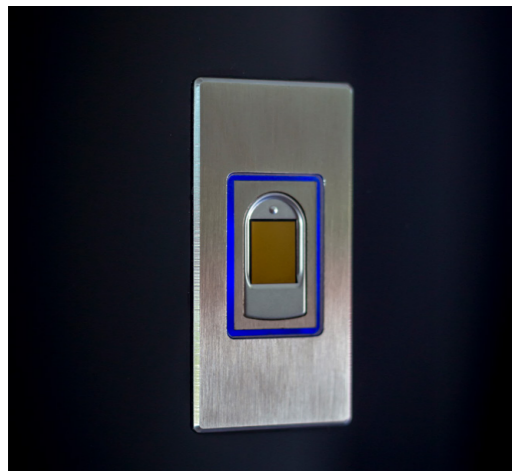
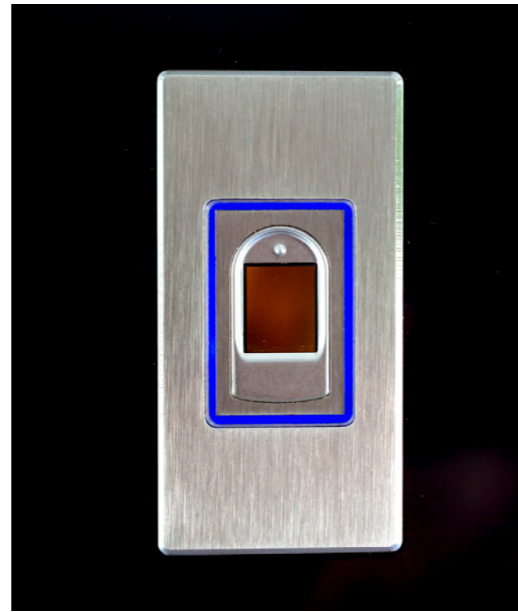
Silver Plate lever handle (Available in brushed silver or black)



INOX 3 (Available in brushed silver only)



LED lights in the recessed handle



S-700 PIVOT DOORS



SPITFIRE
DOORS



Country Gates
& Barriers